



DB Woods Medical

Georgetown, TX



PRE-LEASE UP TO 17,000 ± SF MEDICAL OFFICE SPACE*

- New construction commercial development with 17,000 sq feet of medical office space
- One of the last remaining commercial lots available in the area
- High visibility site on W University Ave, with daily traffic count of 33,037 Georgetown: 7th fastest growing small city in the US
- Current home volume in Georgetown is 105,705 households



The Community



Wolf Lakes Village

164 acre master planned site to be phased in over the next several years. Town-center pedestrian friendly plan includes: retail, restaurants, hotels, cinema, multi-family and townhomes, medical, and corporate campuses.

Wolf Crossing Retail Center

A 250,000-square-foot retail center—includes a combination of national, regional, and local businesses near St. David's Hospital, historic downtown square, and Southwestern University.



The Location

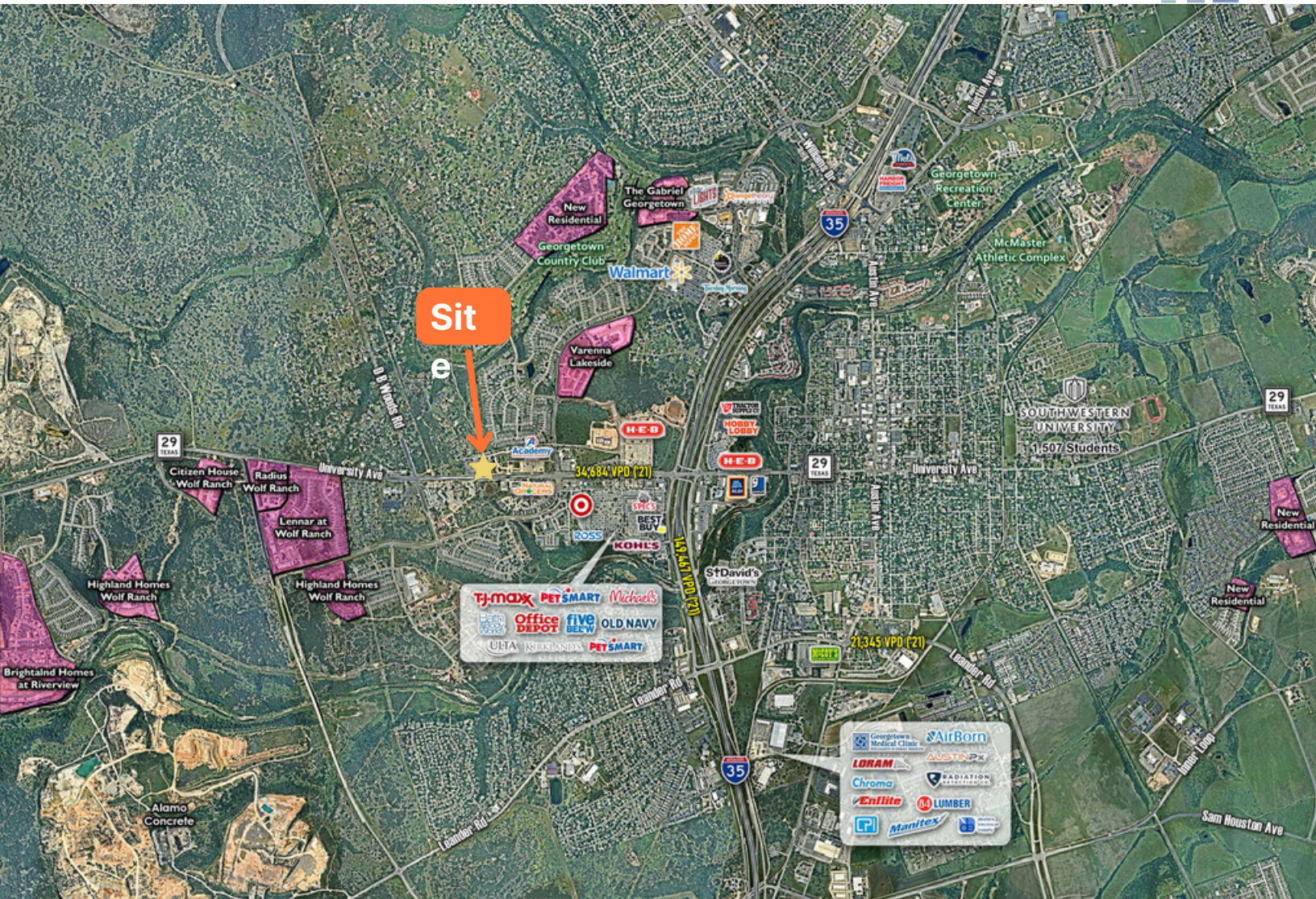


Perfectly situated at the corner of W University Avenue and River Chase Rd, DB Woods is ideally positioned for visibility along one of Georgetown's busiest roads. This inviting two-story building features modern designs and approximately 90 parking spaces situated thoughtfully on a partially wooded property. Each floor has 8,500 square feet of office space available.

DB Woods is located adjacent to the 1,120-acre Wolf Ranch, which is planned to include over 4 million square feet of commercial and residential projects. It is a six minute drive from St. David's Georgetown Hospital, twelve minutes from Baylor Scott & White, and 13 minutes from Seton Hospital of Williamson County.



Aerial



Site Plan



- 17,000 \pm SF BUILDING
- 90 \pm PARKING SPACES
- 2-STORY 8,500 \pm SF PER FLOOR

Drive Times & Demographics

DISTANCE & DRIVE TIME FROM / TO SITE LOCATION

From	Miles	Time
St. David's Medical Center Georgetown	2.2	6 min
Baylor Scott and White Medical Center Round	7.1	12min
Rock Seton Hospital Williamson County	7.3	13min
Round Rock	10.3	12min
St. David's Medical Center Round Rock	11.4	14min
Leander	11.4	15min
Liberty Hill	13.2	16min
Regional Medical Center Cedar Park	13.9	20min
St. David's Health Center Leander	14.4	17min
Hutto	14.9	20min
Pflugerville	16.6	20min
Cedar Park	17	20min
St. David's Medical Center North Austin	18.5	20min
Austin	28.4	28min
Temple / Killeen	41.7	40min

DEMOGRAPHICS

50% POPULATION GROWTH OVER THE LAST 10 YEARS

2020 Demographics (Estimates) 3-MILE 2020 42,294	5-MILE	10-MILE
Households 14,597	70,934	299,266
Daytime Population 19,184	24,936	105,705
Average HH Income \$88,179	28,217	84,178
Total Businesses 1,783	\$102,223	\$113,428
	2,584	7,757
2019-2025 Annual Growth Rate 3.10%	3.56%	3.29%



Traffic Count Estimates

2015 / 2018 cars per day



Collection Street	Cross Street	Daily Traffic Volume	Year	Distance
W University	E of Wolf Ranch	33,03	201	0.
Ave D B Woods	Pkwy N of W	7	8	7
Rd	University Ave	11,57	201	m
		6	5	i
				0.
				4
				m
				i



Contact Our Team



FOCUSED MEDICAL REAL ESTATE EXPERTISE

Mark Storey

Broker Agent

512.387.7836 (m)

mstorey@practicere.com

Macie Morris

Robinson

Associate Agent

512.900.6552 (m)

mmorris@practicere.com